



GAMALEARN
Empower. Improve. Innovate

GamaLearn

Company Profile

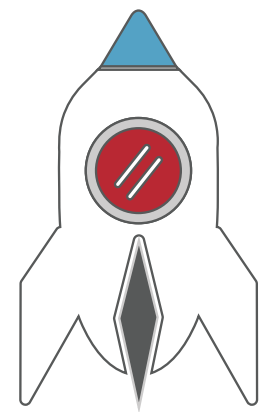


@gamalearn

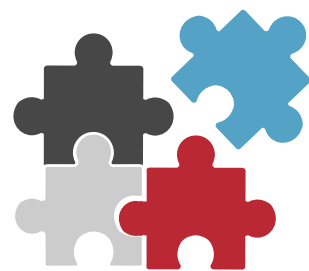


www.gamalearn.com

ABOUT COMPANY



GamaLearn, established in 1989, stands at the forefront of evolutionizing learning with three core values "**Empower. Improve. Innovate.**"



GamaLearn is a strategic Microsoft partner (**ISV/AEP/Co-Sell**), offering our customers premium services using Cloud, AI, Mobility, IoT, and more to assist with their digital transformation journey.

GamaLearn has a comprehensive products, solutions, SME's, & 30+ years of strategic partnerships in the MENA region. Through that, GamaLearn has a proven track record of tried-and-true methodologies to overhaul both learning and assessment practices.



@gamalearn



www.gamalearn.com

“Mission

At **GamaLearn**, our mission is to empower learners by offering innovative, user-friendly technology solutions that improve learning experiences, ensuring quality education is accessible and impactful for everyone, everywhere.

“Vision

GamaLearn's vision is to become a global leader in learning technology, revolutionizing the learning landscape through continuous innovation and optimization of our products and services. We aim to create an environment where learning is synonymous with empowerment, improvement, and innovation.



@gamalearn

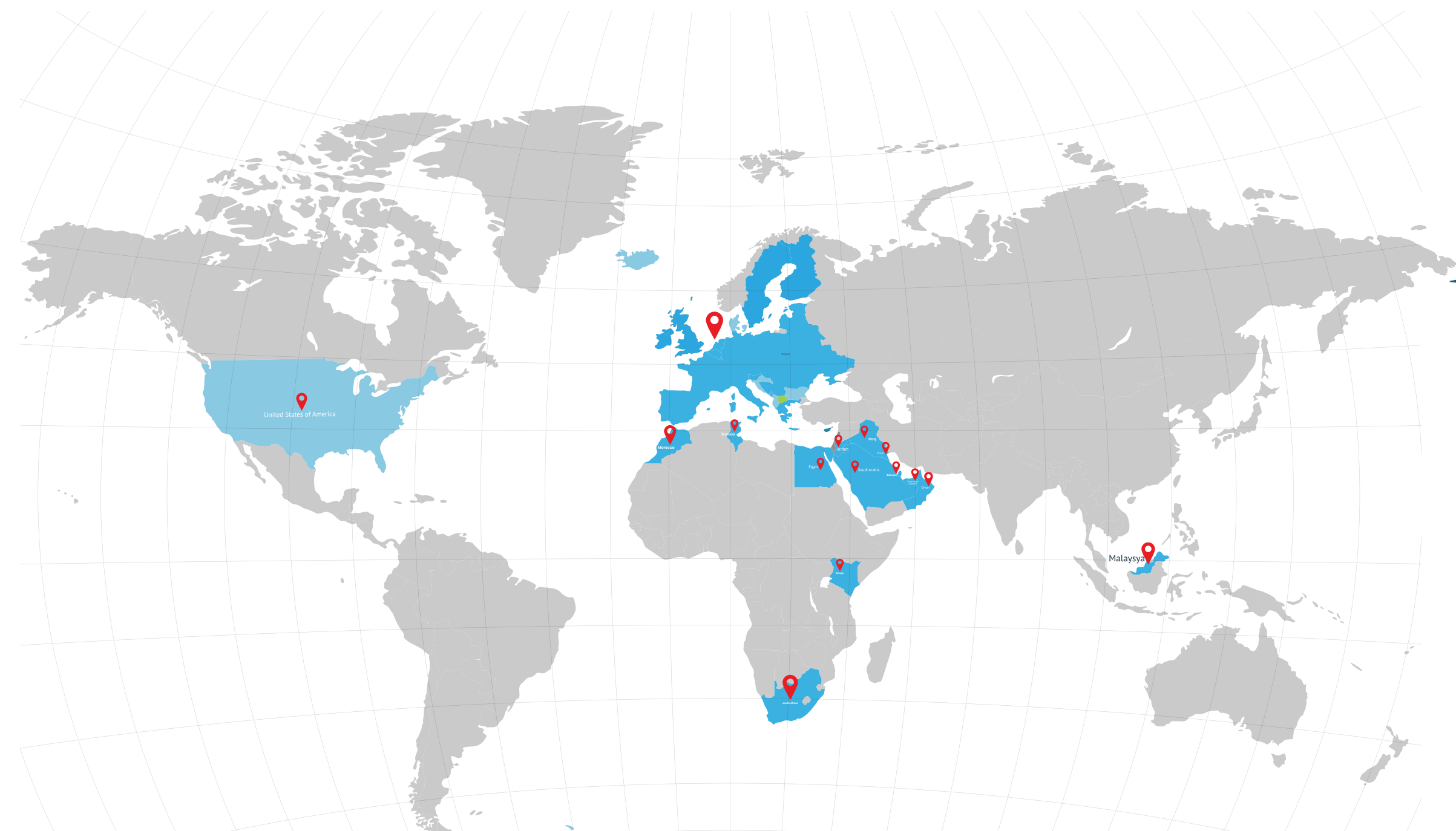


www.gamalearn.com

Our Business Footprint



- 📍 KSA
- 📍 UAE
- 📍 Egypt
- 📍 Oman
- 📍 Kuwait
- 📍 Kuwait
- 📍 USA
- 📍 Bahrain
- 📍 Iraq
- 📍 EUC
- 📍 Jordan
- 📍 Morocco
- 📍 Malaysia
- 📍 Tunisia
- 📍 Kenya
- 📍 South Africa



OUR PARTNERS

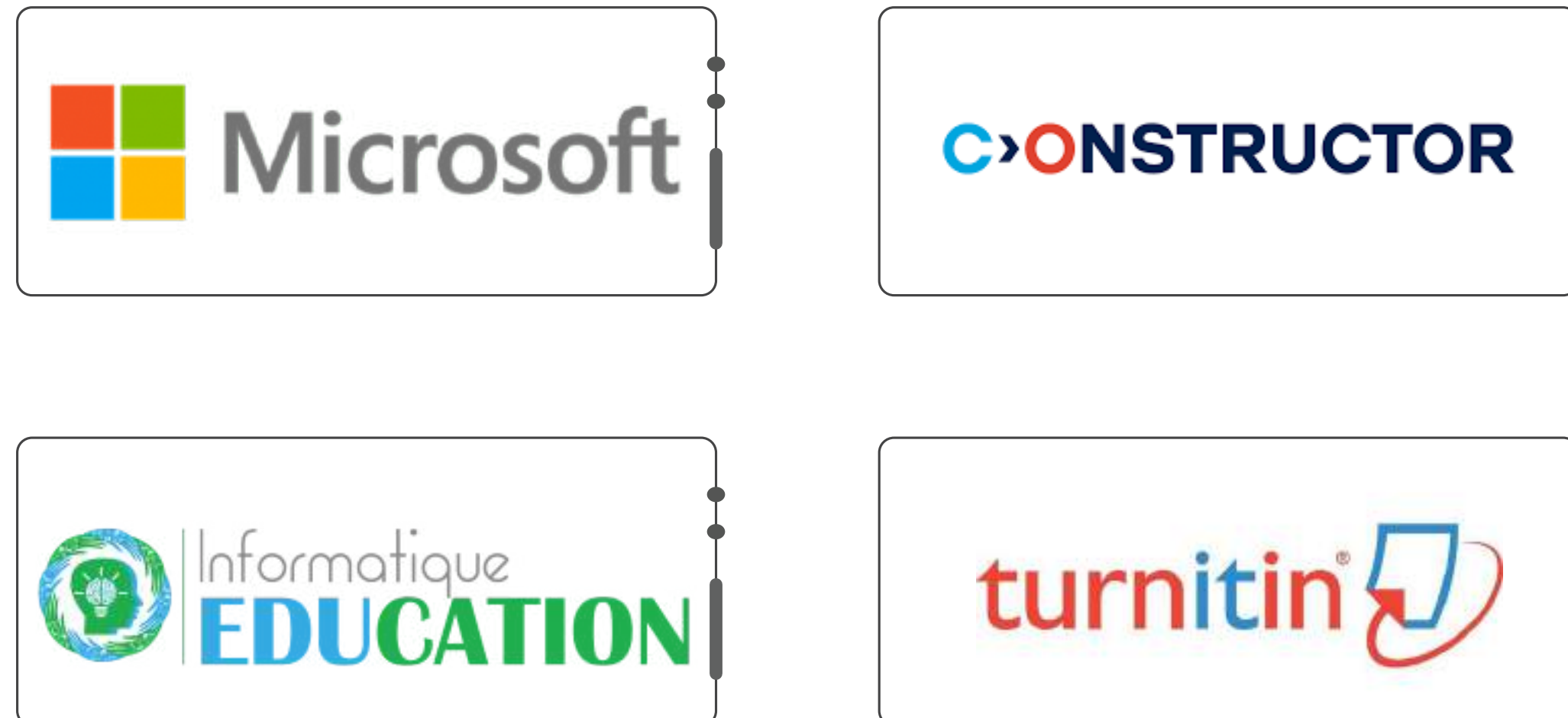
Channel Partners



View More



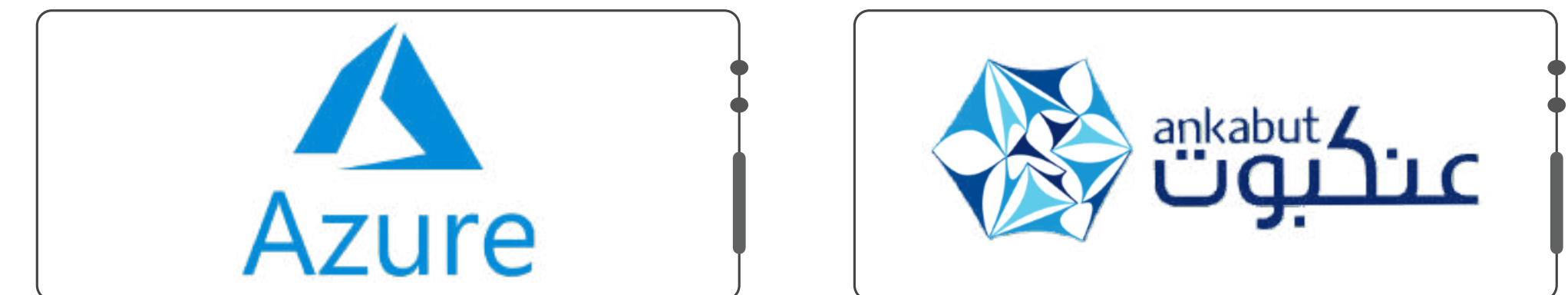
Technology Partners



View More



Hosting Partners



View More



@gamalearn

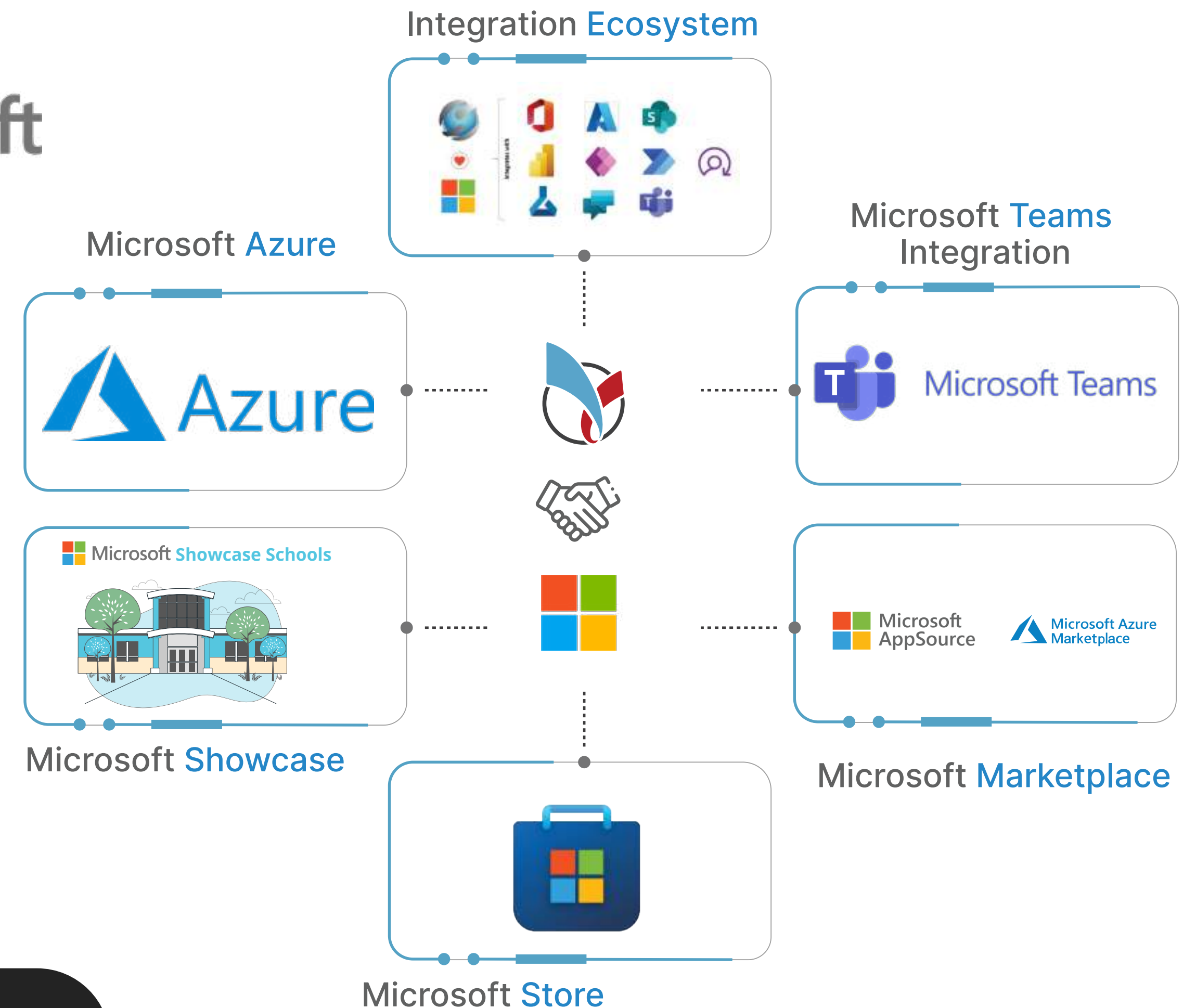


www.gamalearn.com

OUR Global Strategic Partnership with Microsoft

GamaLearn is a strategic **Microsoft** Global Education Partner, offering our customers a premium service using Cloud, AI, Mobility, IoT, and more to assist with their digital transformation journey.

We have a global partner network that is ever-growing, through our strategic partnership with Microsoft in Middle East, Asia and Africa.



@gamalearn



www.gamalearn.com

Associations

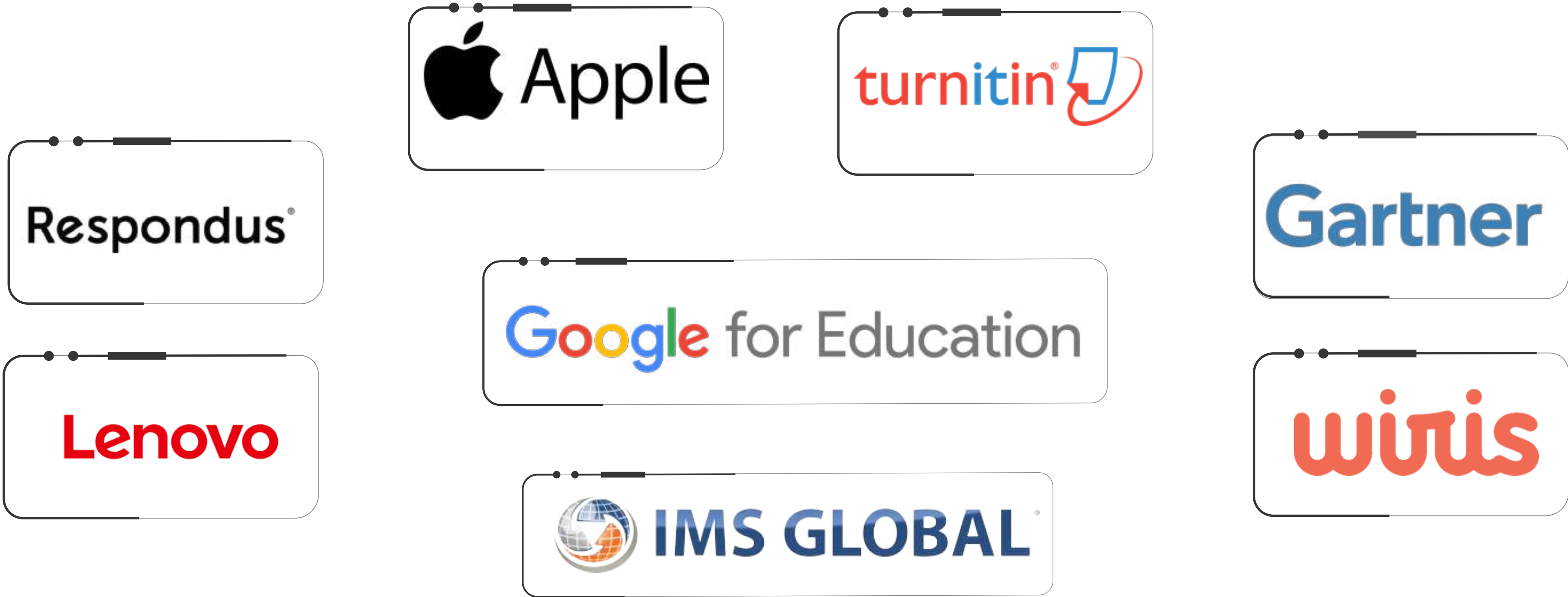


In Progress

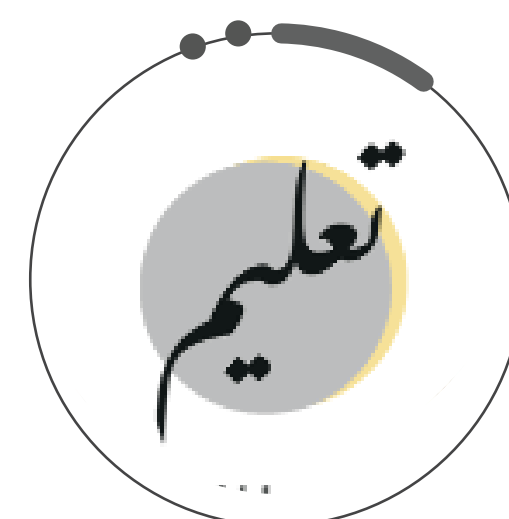


Global Industry

Alliances



Highlighted Clients



Success Stories

Since 1989, GamaLearn has collaborated with multiple clients and partners. With their help, we produced several success stories and case studies to showcase our effectiveness and strengthen our presence in the market. These success stories and case studies with you whether they are from the Education, Corporate, Enterprise, or Government Sector.



View More



OUR RESOURCES



BLOG



Discover the GamaLearn Blog, your go-to destination for educators, industry experts, our vibrant community, and valued customers and partners

View More



ACADEMY



Discover a world of knowledge and growth at GamaLearn Academy. Dive into a wealth of resources, from expert-led courses to cutting-edge insights on education and technology.

View More



COMMUNITY



Connect, collaborate, and innovate with like-minded individuals at the GamaLearn Community. Dive into discussions, share insights, and stay at the forefront of education and technology

View More

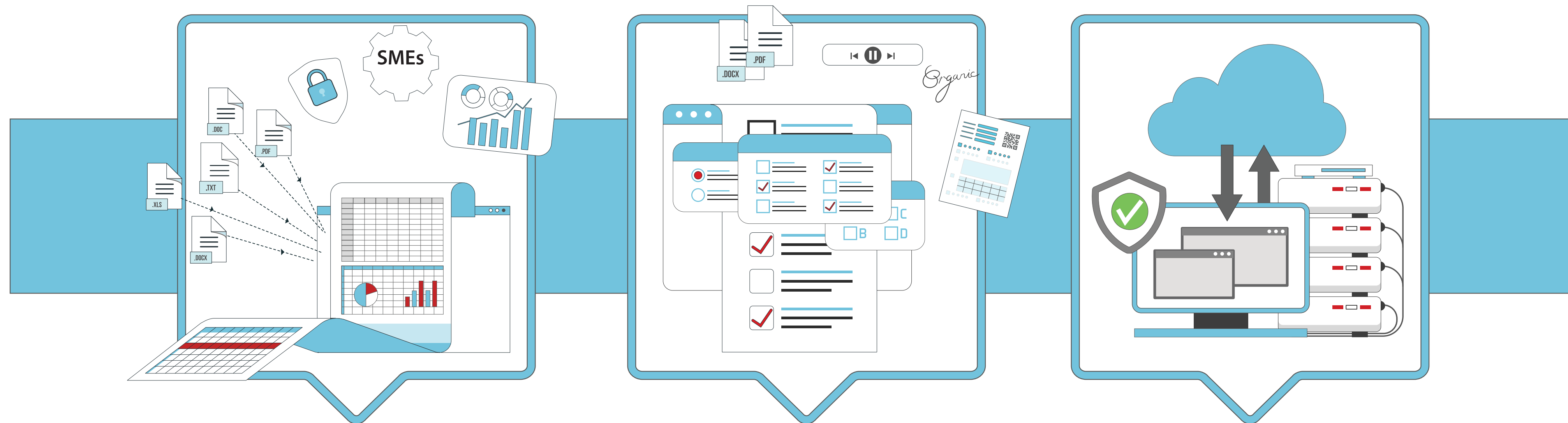


@gamalearn



www.gamalearn.com

OUR Services



Curriculum
Conversion & Migration

Question
Creation & Conversions

Hosting Services



Integration

Customization

Implementation



Support Services

Training

Consultancy Services

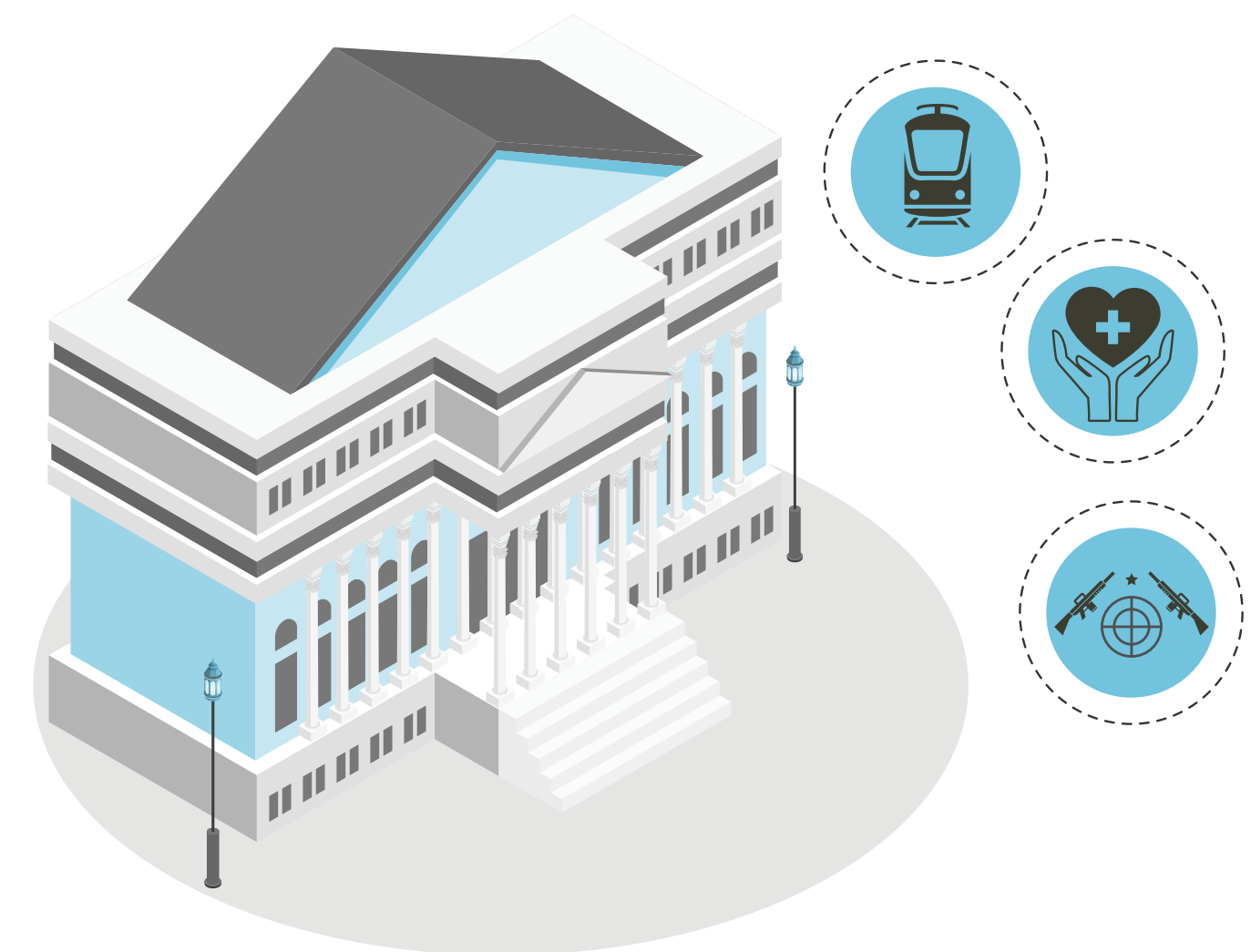
GamaLearn Sectors



Education



Corporate and Enterprise



Government

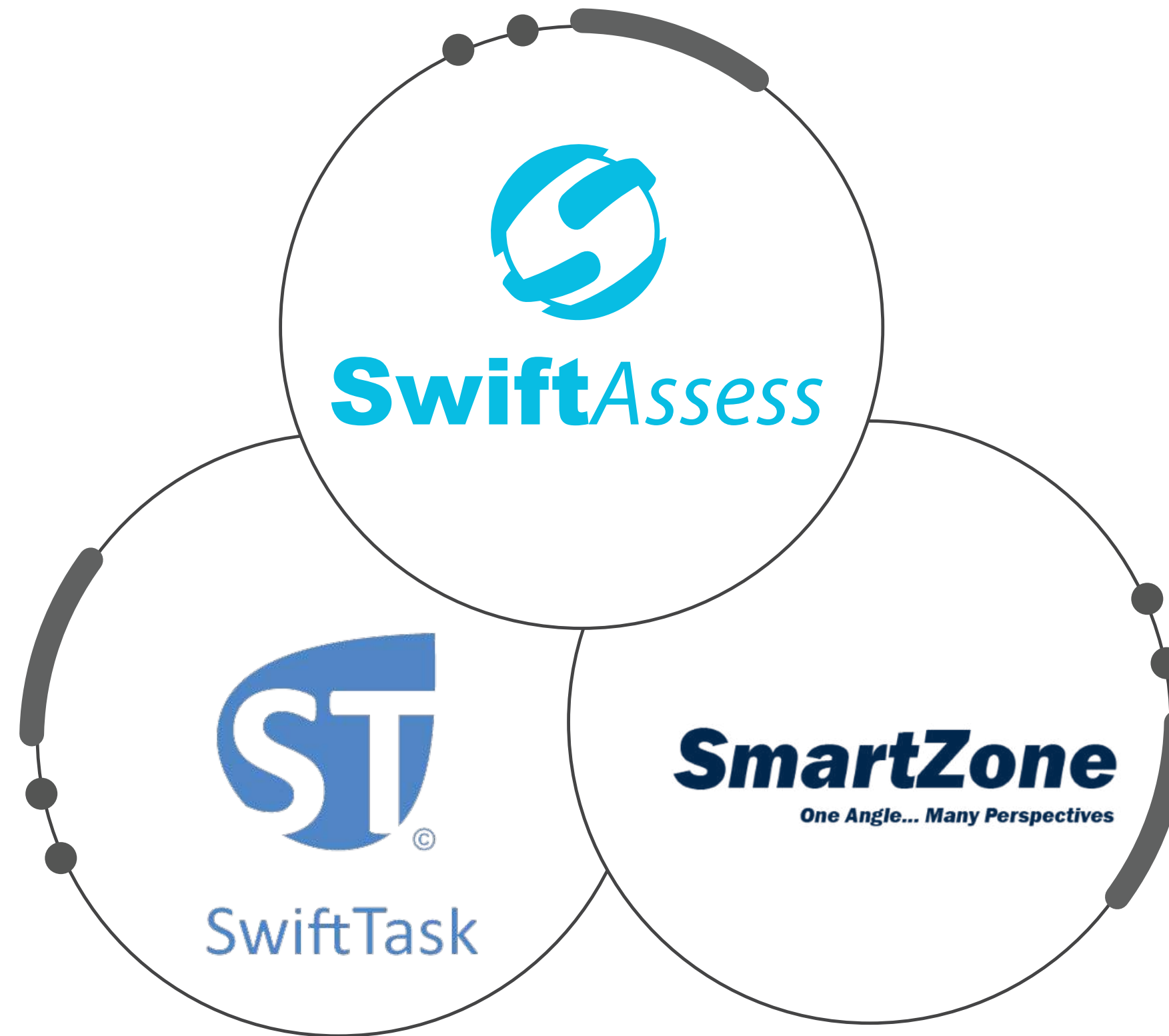


@gamalearn



www.gamalearn.com

Our Platforms



@gamalearn



www.gamalearn.com



SwiftAssess

SwiftAssess is a one-stop shop for all your Assessment needs, ranging from tried-and-true methodologies and features that guides your journey through Authoring, Delivering and Tracking your assessment transformation strategy at all levels in your organization

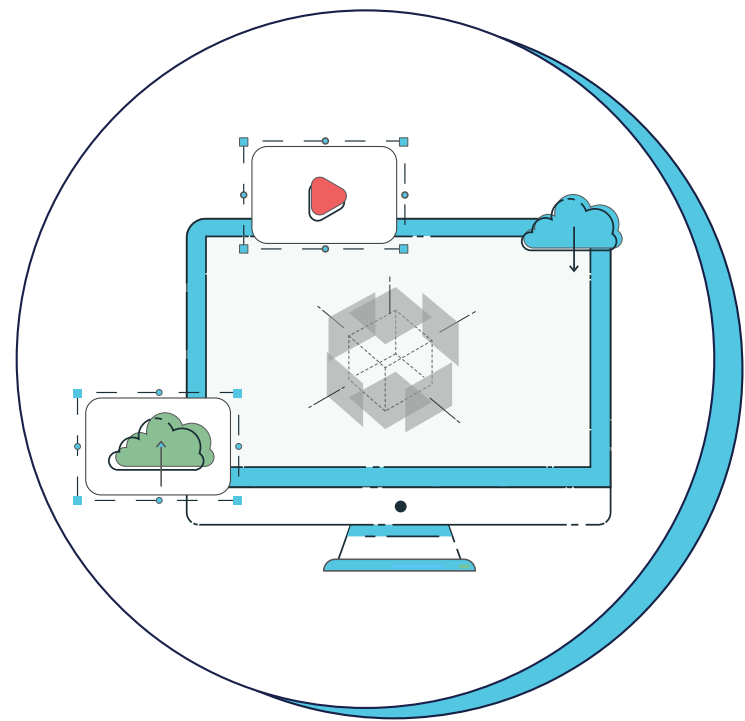


@gamalearn



www.gamalearn.com

SwiftAssess Solutions



Immersive Assessment
3D and Media Based.



Digital Assessment
With high security and
device compatibility



SmartPaper
Paper Based
Examination Any Paper,
Any Printer, Any Scanner.



Observer
Practical evaluation
and on site evaluation



Exam Security
Secure, high-quality
assessments on
Windows and Mac desktops



@gamalearn



www.gamalearn.com



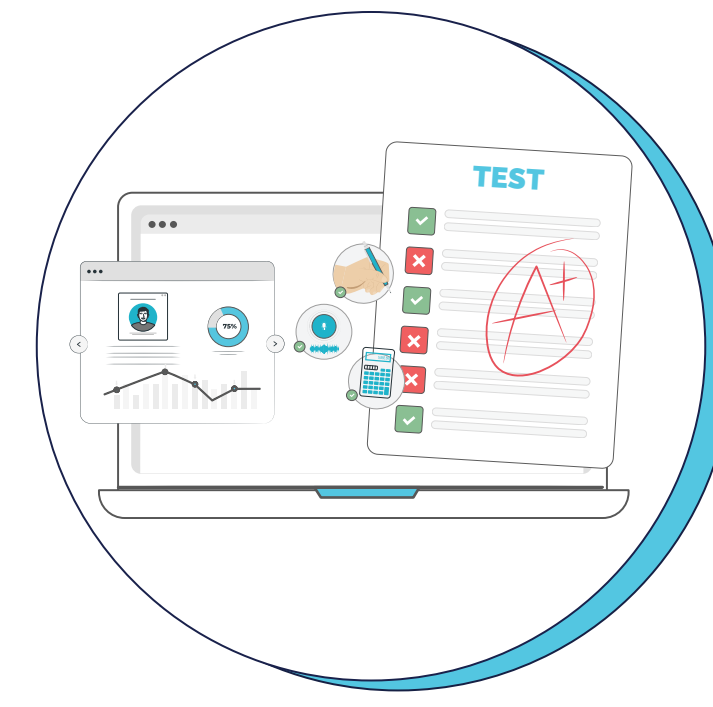
ACU

Offline Assessment Delivery



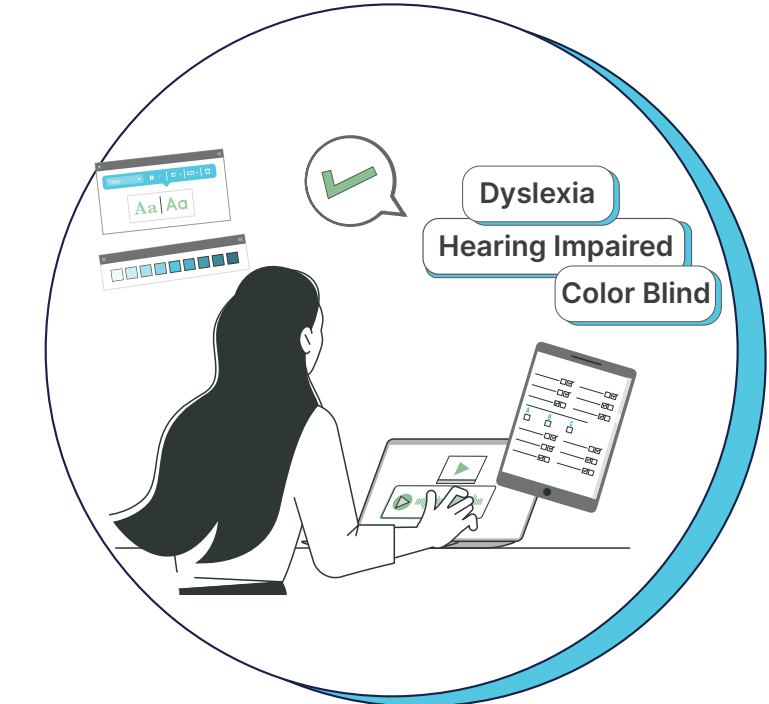
Test Center

Transform your test center with streamlined automation experience



GradeMate

Download, grade offline, and sync at your convenience



Exam Accessibility

Compliant, user-friendly applications with intuitive design and high accessibility standards



@gamalearn



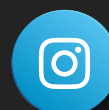
www.gamalearn.com



SwiftTask offers businesses flexibility, cost-effectiveness and instant access to a vast pool of skilled talent. Whether you work individually or run your own business, SwiftTask gives you the chance to expand your capacity online. Thousands of Task Providers are already working professionals like you.



SmartZone is a platform to manage training operations in schools and institutes in a systematic manner. All related data and operations are provided to the training management. This enables you to evaluate the progress of training and obtain insightful results and statistics used in training plans.



@gamalearn



www.gamalearn.com

OUR Commitments

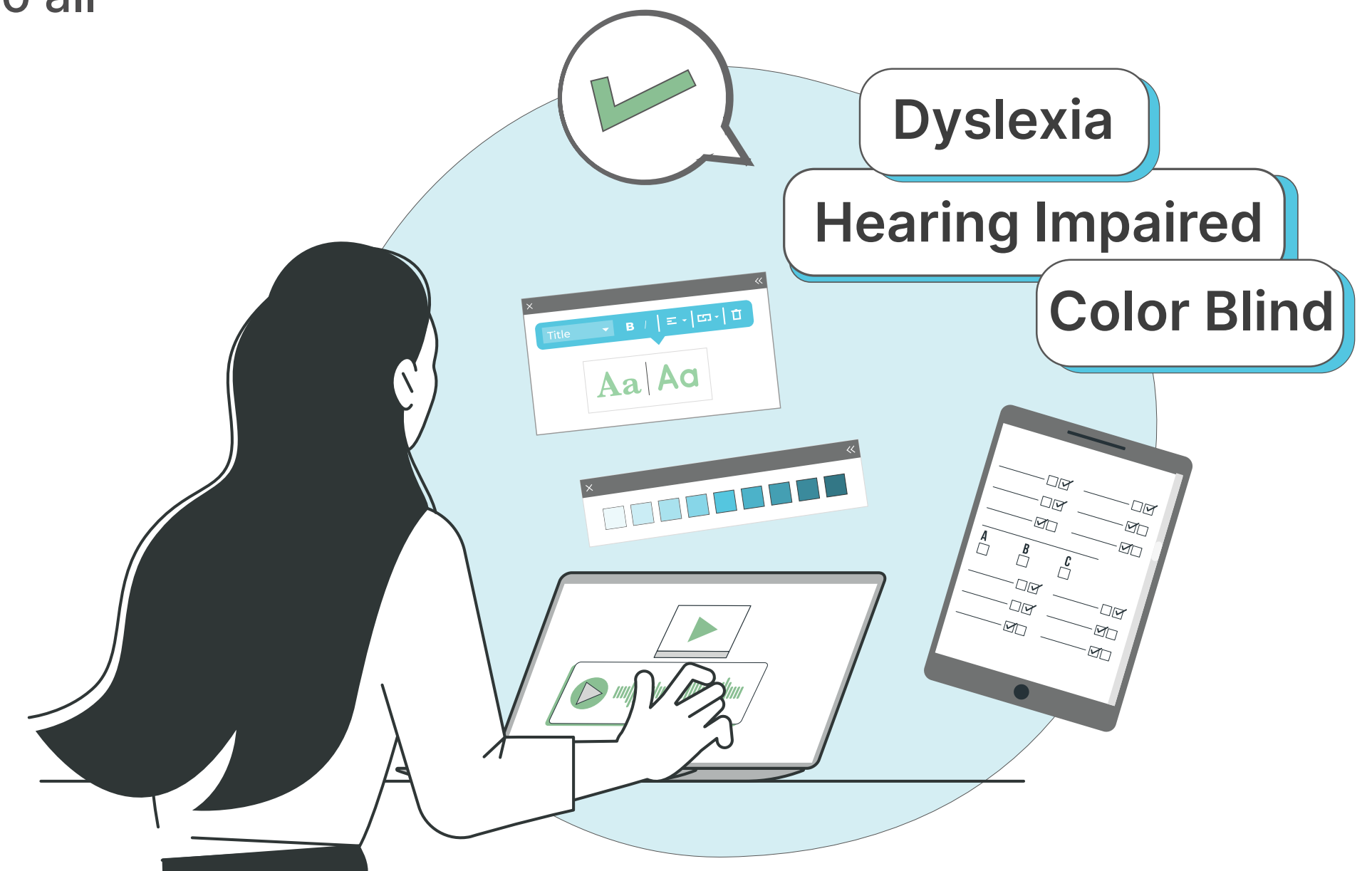
Accessibility and Special Needs

GamaLearn is committed ensuring that our products and services are accessible to all individuals, regardless of their abilities or special needs

SwiftAssess offers features like adaptive testing, accessibility solutions, and the ability to take an assessment from many types of devices. Additionally, educators can customize features of their assessments to accommodate students with special needs. A few examples of accessibility features include adding extra time, enabling audio and video transcripts, adjusting color schemes, controlling question fonts, and magnifying images. This can make a world of difference for students with hearing impairments, dyslexia, color blindness, ADHD, and more.

Accessibility features allow each and every student to thrive.

View More



@gamalearn



www.gamalearn.com

Sustainability at Our Core

GamaLearn embraces sustainable practices at every level of our operations, from reducing our carbon footprint to minimizing waste.

Digital assessment platforms, like SwiftAssess, are driving this vision by leveraging technology to carve a sustainable path forward in education.

Today, we explore how these eco-friendly solutions are reshaping traditional assessments, leading us toward a greener future.

Our blog on [Steering Digital Assessment Industry Towards Sustainability](#)

View More



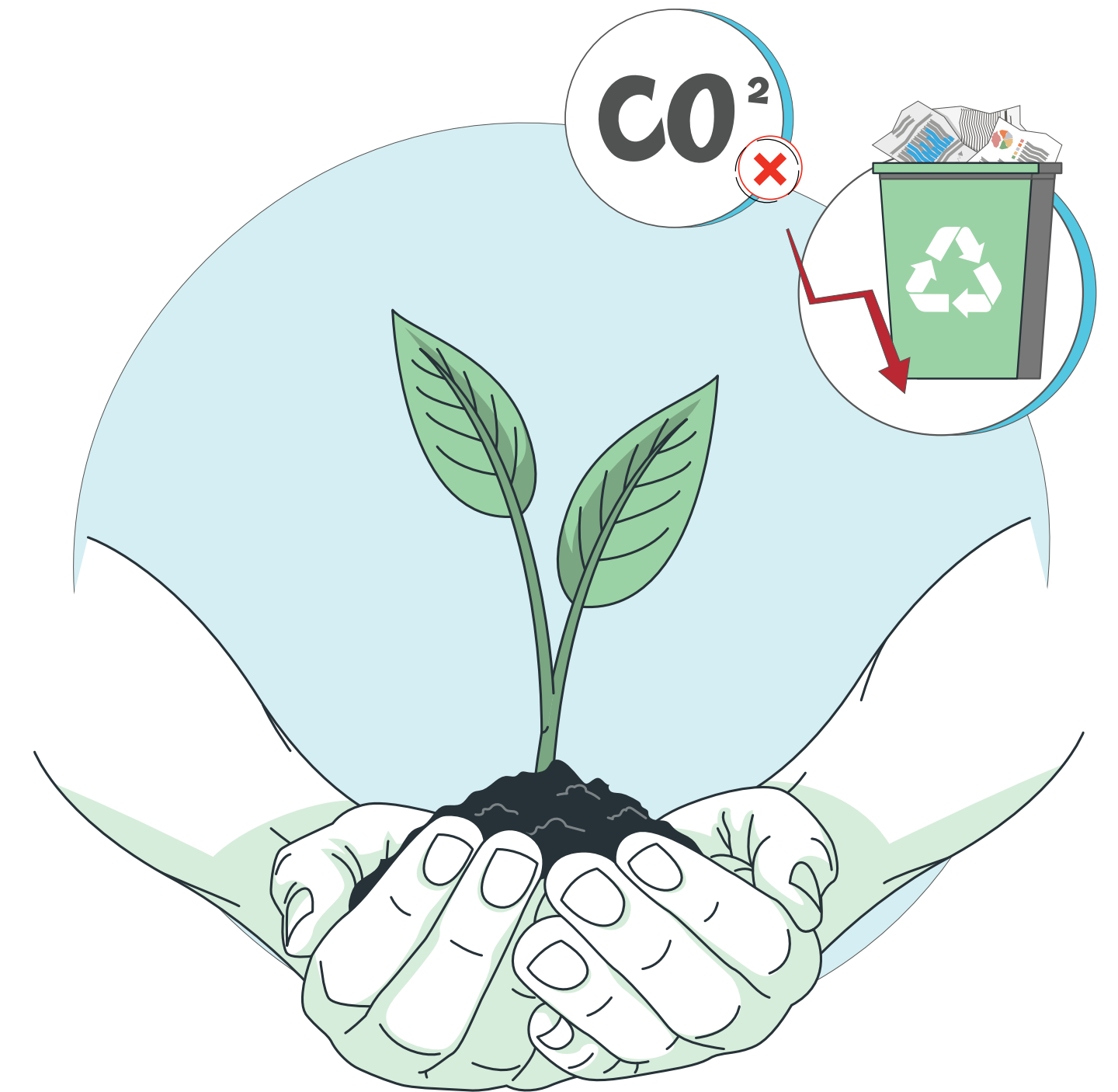
● AI Proctoring



● Seamless Integration



● SmartPaper



@gamalearn



www.gamalearn.com

Exceeding Industry Standards and Quality

GamaLearn consistently pushes the boundaries of quality and innovation within our industry, ensuring that our customers receive products and services of the highest caliber



@gamalearn



www.gamalearn.com

Security and Privacy

Protecting the privacy and security of our customers is paramount.

GamaLearn has implemented robust frameworks to safeguard sensitive information, ensuring that trust and confidentiality remain at the heart of our interactions.

View More 



- [GDPR Compliance](#) 
- [Our Webinar on AI Security with Constructor](#) 
- [Secure Browser and Mobile](#) 



@gamalearn



www.gamalearn.com

Giving Back to Society

GamaLearn believes in giving back to society by empowering individuals through upskilling programs, internships, workshops, and sponsorship opportunities. Our investment in people and communities is an integral part of our mindset

- **courses and upskilling for employees**
- **Remote working for flexibility**
- **Workshops for clients and employees as well**



@gamalearn



www.gamalearn.com

Commitment to Diversity and Inclusion

GamaLearn embraces and encourages diversity in thoughts, ideas, and backgrounds, fostering an inclusive and respectful environment that enriches our corporate culture and fuels innovation.

- **GamaLearn promotes a culture of continuous learning and development.**
- **Provides access to a variety of learning resources, including online courses, workshops, and seminars.**
- **Provides support for attending courses, obtaining certifications, or participating in workshops**
- **GamaLearn acknowledges and rewards employees who make significant progress in upskilling**



@gamalearn



www.gamalearn.com

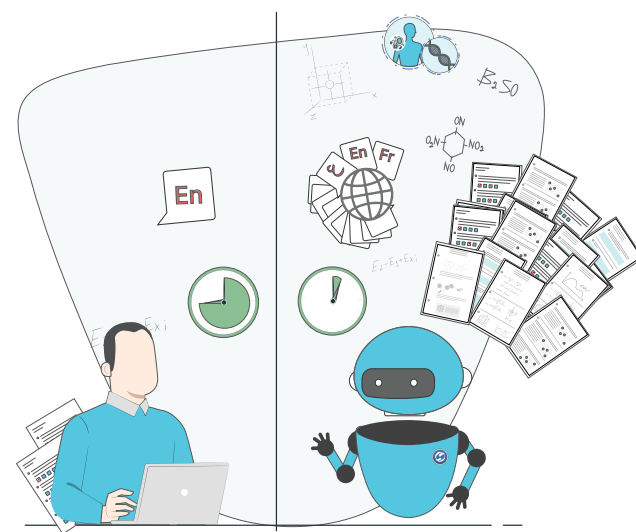
Our Commitment to The Era of AI

We have continuously pursued innovation, investing in research and development to integrate AI seamlessly into our products and features. We are proud that we have achieved significant milestones, successfully enabling AI workloads across our entire product portfolio. Meet the cutting-edge AI Features in SwiftAssess, Powered by GPT-4 and Microsoft Azure Cloud!

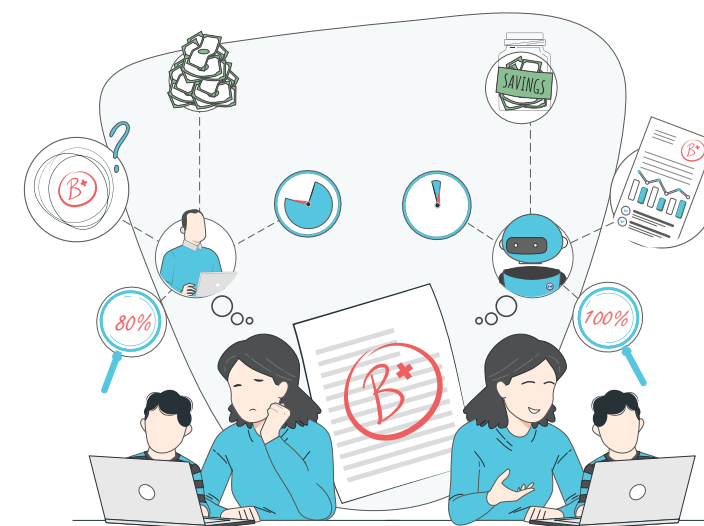
View More



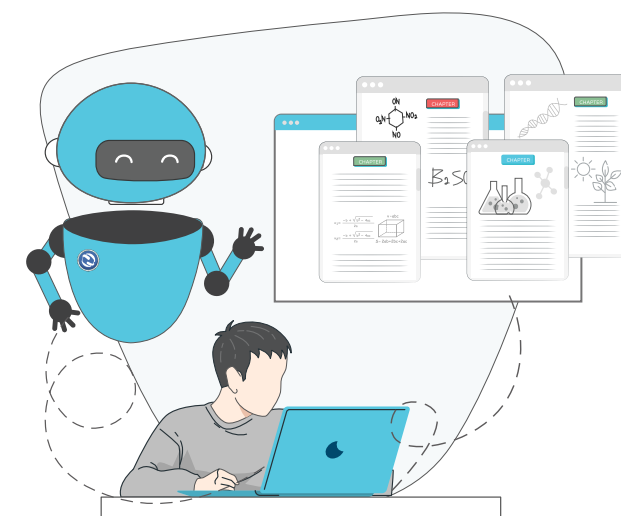
Some of the Powerful Benefits Unlocked:



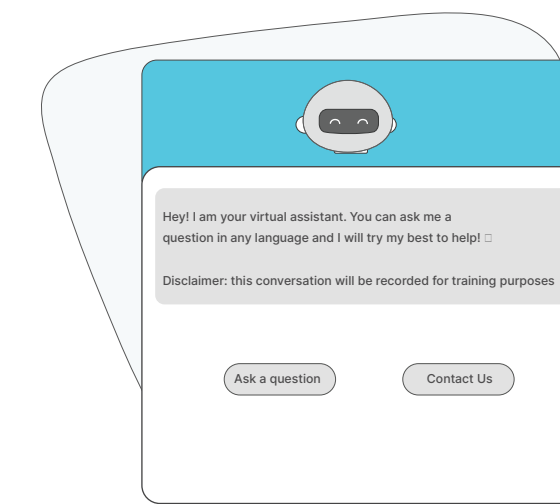
AI Exam Design & Question Bank Creation



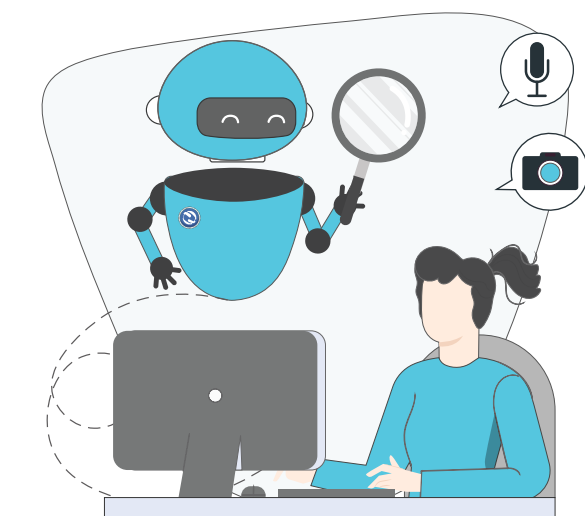
AI Auto-Grading



AI Curriculum Content Generation



AI Support



AI Proctoring

AI Security Webinar partnering with Constructor



@gamalearn



www.gamalearn.com

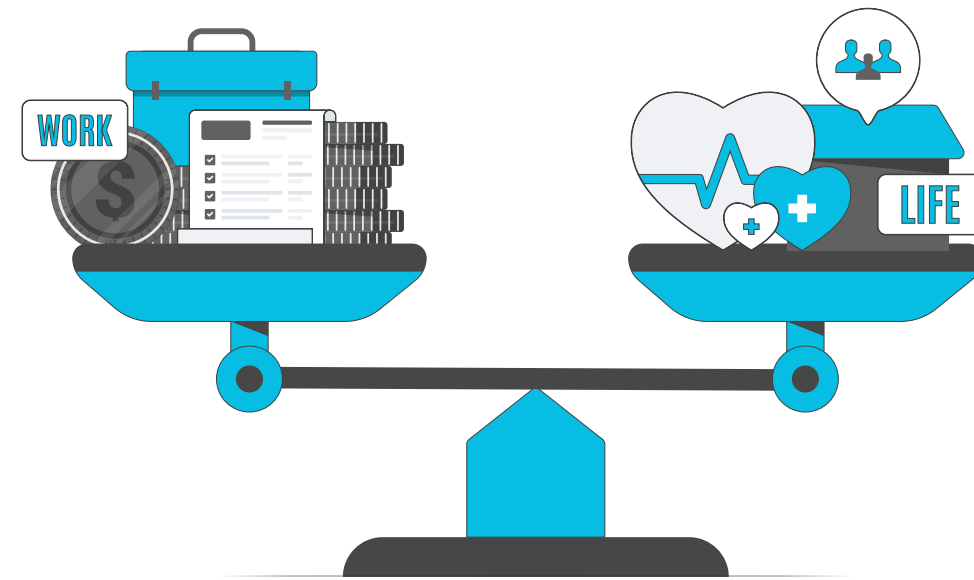
Company Culture

Celebrating Diversity, Flexibility, and Inclusion



Diversity Matters

Our global team brings talents from multiple countries together, sparking innovation through diverse perspectives



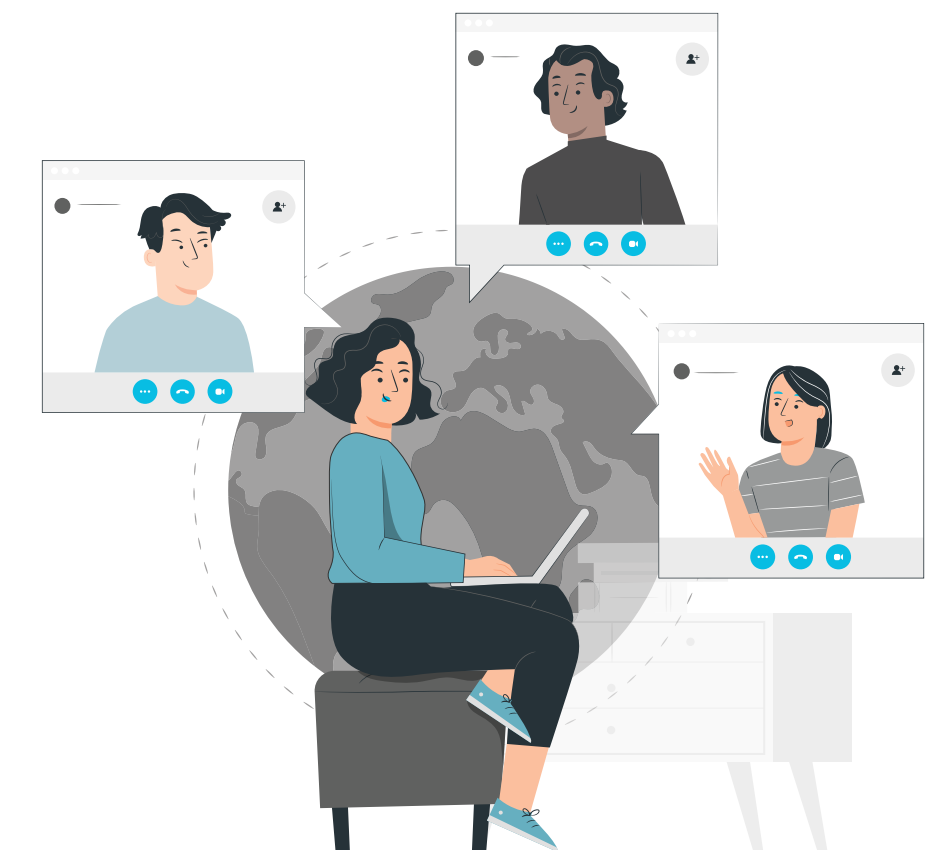
Flexibility Fuels Success

Work-life balance is a priority, empowering our team with flexible arrangements to excel



Embracing Inclusion

Every voice is valued, fostering a sense of belonging where all ideas contribute to our success



Global Collaboration

Our remote work culture unites diverse talents worldwide, strengthening our global team.

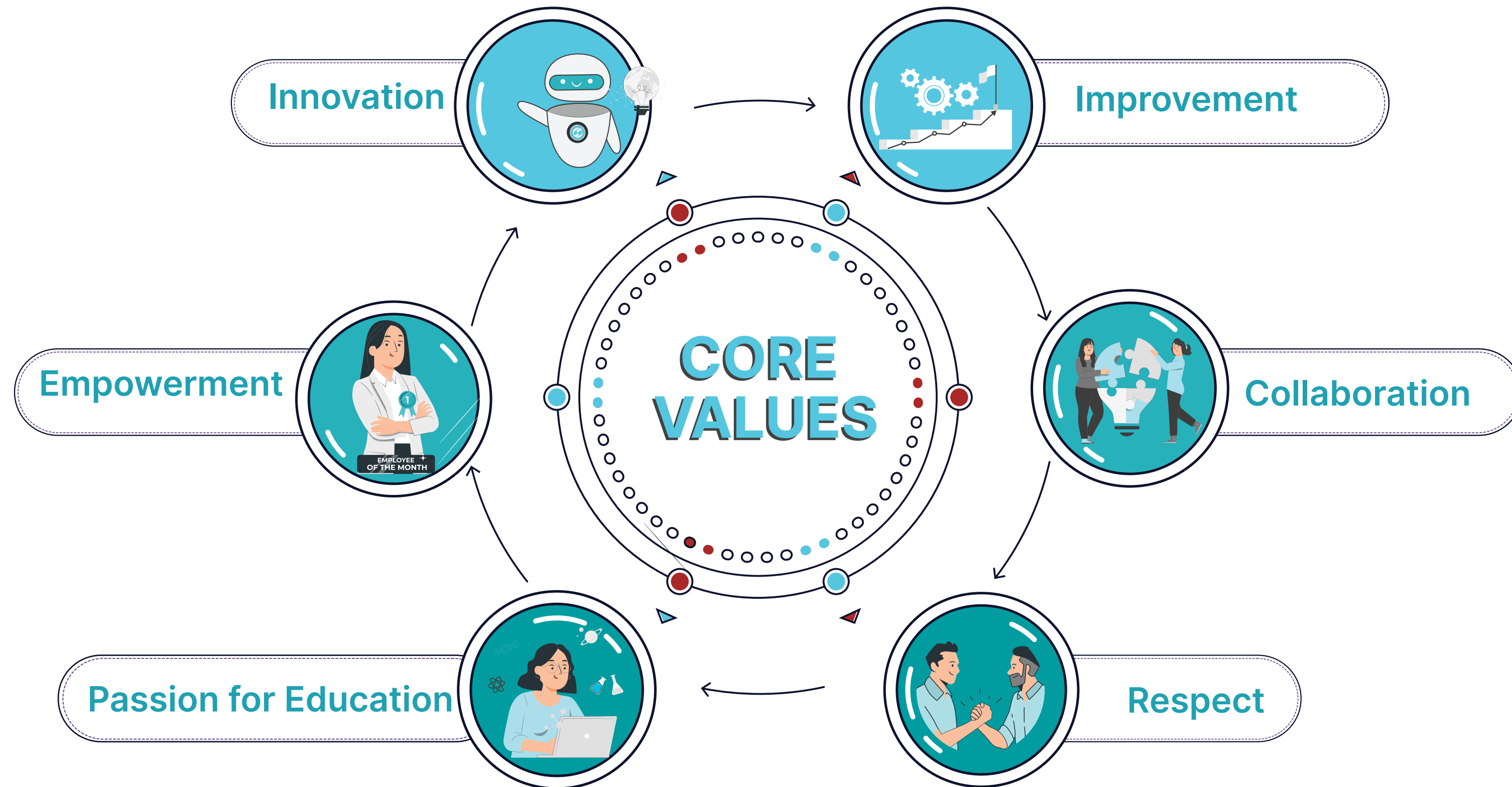


@gamalearn



www.gamalearn.com

Our Core Values

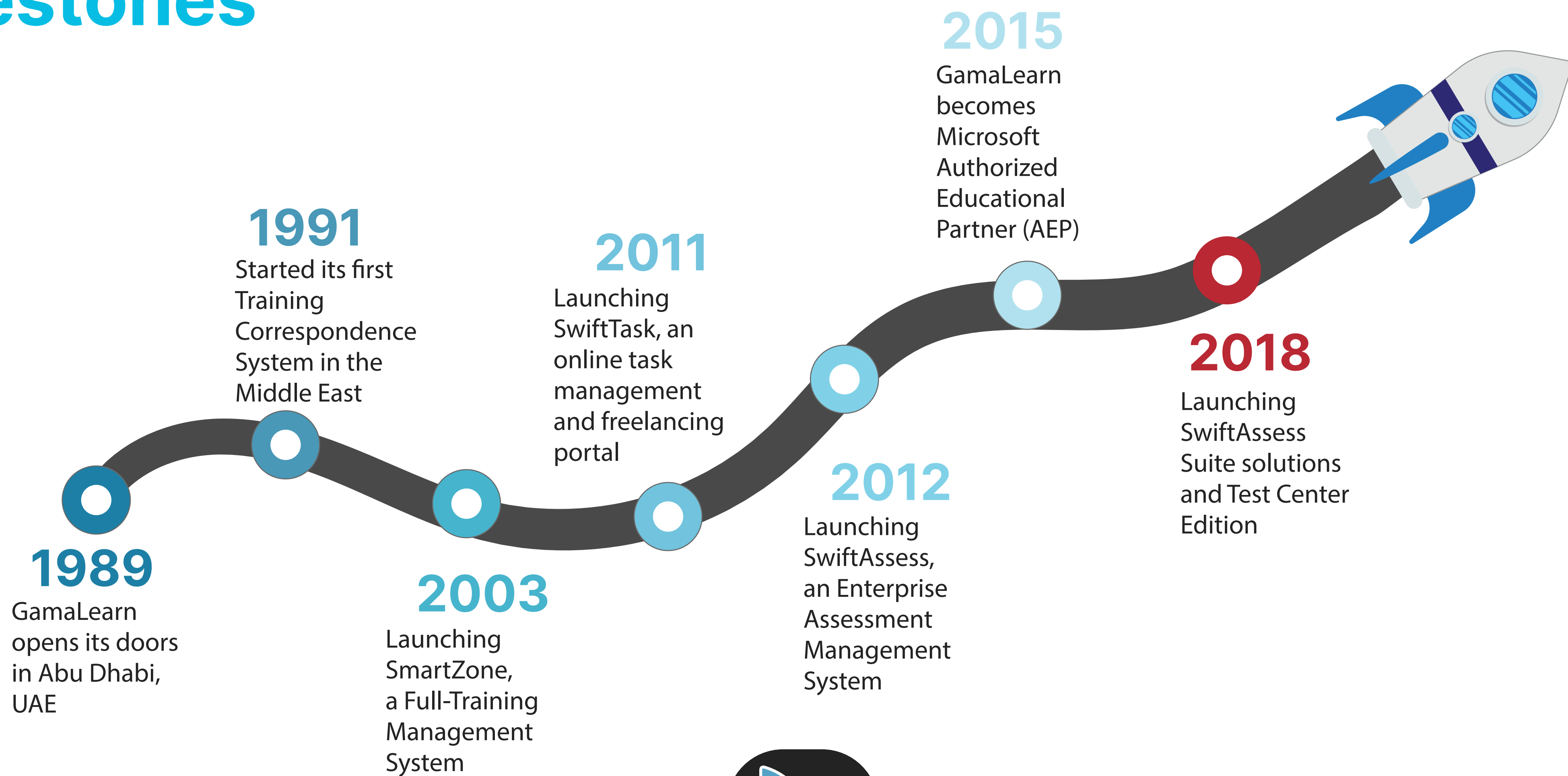


@gamalearn



www.gamalearn.com

Milestones



@gamalearn



www.gamalearn.com

Awards Archive

- IT SIG in Sharjah University – [United Arab Emirates](#).
- Chamber of Commerce in Abu Dhabi - [United Arab Emirates](#).
- Telecommunication and Technology Horizons Magazine - [Kuwait](#).
- Arab Information and Communication Technology Organization – [Tunis](#)
- Arab Network for Open and Distance Education - Amman – [Jordan](#)
- Higher Education Accreditation Commission – Amman - [Jordan](#)
- Abu Dhabi TV Station – [United Arab Emirates](#)
- Different IT Magazines, News Papers in Arab Countries
- Malaysian academic accreditation body
- Assuit University shield – [Egypt](#)



Recent Awards and Nominations



Gess Awards



BETT Awards



**EAA Eassessment
Associations Awards**



ATP Awards

Conferences Participation History

• BETT UK



• BETT ASIA



• BETT MEA



• GESS Dubai



• Edutech ASIA



• Edutech MENA



• Leap

• Edu tech Egypt



• EduGate Egypt



@gamalearn



www.gamalearn.com

Our Headquarters

UAE Office



Mohammed Bin Khalifa St
Al Danah - Al Markaziyah East
Abu Dhabi

Egypt Office



**COMING
SOON**



@gamalearn

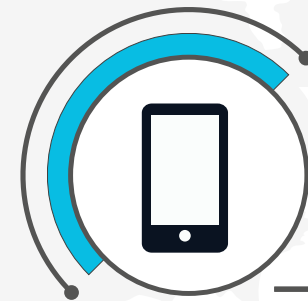


www.gamalearn.com



GAMALEARN

Empower. Improve. Innovate



+971 2 6222345

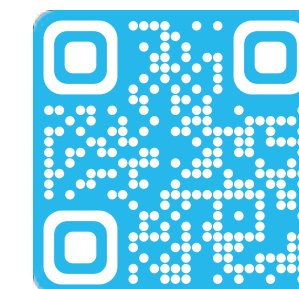


sales@gamalearn.com



@gamalearn

www.gamalearn.com



Scan Here